



Presented By: Mirza Salman Ispahani, Bangladesh

# Bangladesh Textile Industry at a glance

## Yarn Manufacturing

### Installed Capacity:

- Spindles : 13.6 Million
- Rotors : 0.3 Million
- Air Jet : 14 Thousand

**Annual Yarn Spinning Capacity: 3.2 billion Kg**

## Fabric Manufacturing

### Installed Capacity:

- Shuttle-less looms: 51.8 Thousand
- Shuttle Looms : 17.2 Thousand
- Circular Knitting : 20.7 Thousand

**Annual fabric manufacturing Capacity:**

- Woven fabric : 4.1 billion meters
- Knit fabric : 3.7 billion meters

## Fabric Finishing

### Installed Capacity:

- No. of Mills : 251

**Annual Processing : 4.0 billion meters**

## Industry Strength

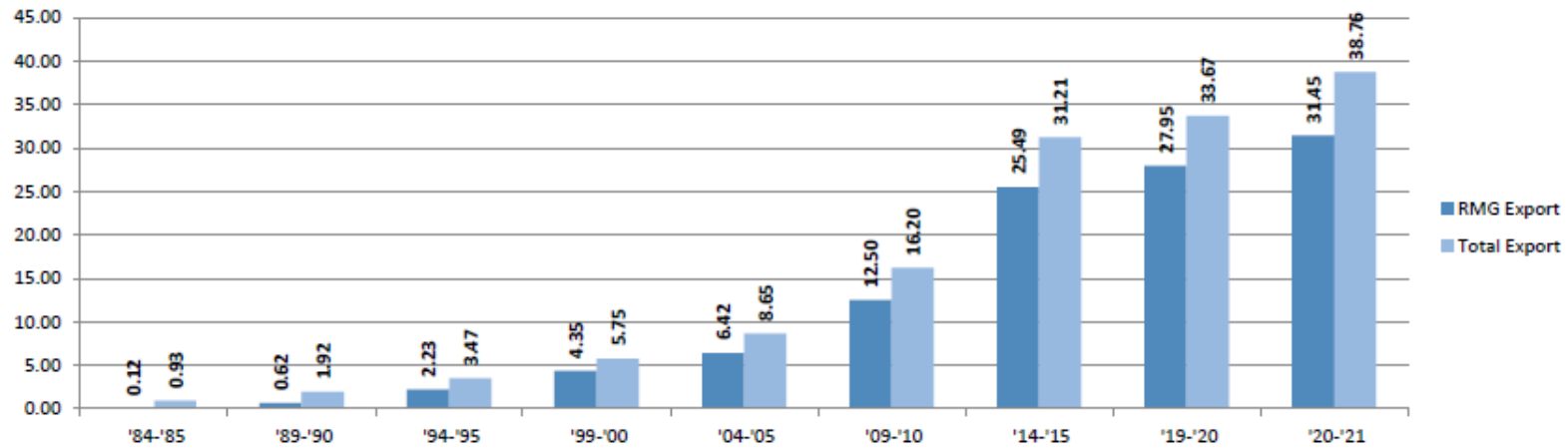
**Bangladesh** is a trusted hub of apparel sourcing across the globe. More than **150** countries import ready-made garments from Bangladesh for:



# Rise of the RMG Industry in Bangladesh

Recent Export Figure

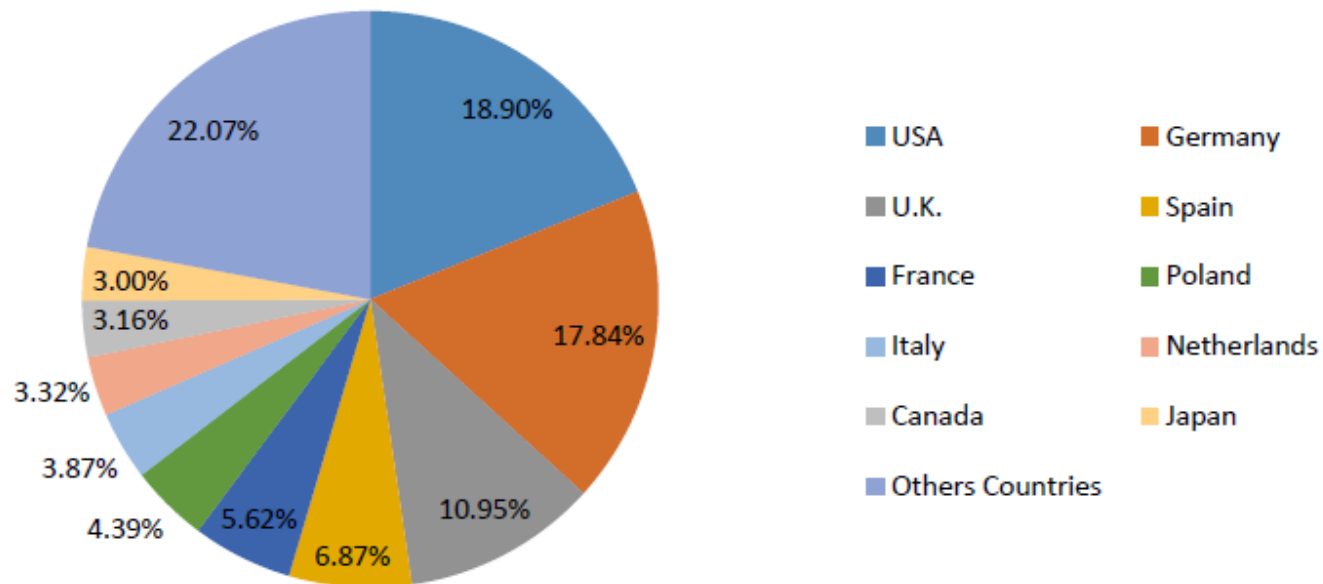
Year	Amount (Billion US\$)
2016-17	28.15
2017-18	30.61
2018-19	34.13
2019-20	27.95
2020-21	31.45



RMG - An Unbeaten Path of Growth

## Major Markets of Bangladesh Apparel

BD's RMG Export Share to Top 10 Markets in FY2020-21  
Values in Million US\$



## Recent export of textile products of Bangladesh

<b>Year</b>	<b>2019-2020 (Billion US\$)</b>	<b>2020-2021 (Billion US\$)</b>	<b>Growth</b>
<b>Woven</b>	14.0	14.5	3.2%
<b>Knit</b>	13.9	16.7	21.9%
<b>Total RMG</b>	<b>27.9</b>	<b>31.5</b>	<b>12.5%</b>

Source: BGMEA

## Impacting the lives of millions

83%

Share of export earnings

11%

Contribution to GDP

60%

Share of female labor force

Empowering women

## New Investment

Textile entrepreneurs to invest \$2.5 billion by 2023

There will be 2.5 million newly installed spindles

Investment will mostly go into adopting new technology

Many textile manufacturers are now overwhelmed with export orders

Trade tension between the US and China have also encouraged local entrepreneurs to invest in some value-added yarn and fabrics.



## Impact Caused by COVID-19

### Financial loss

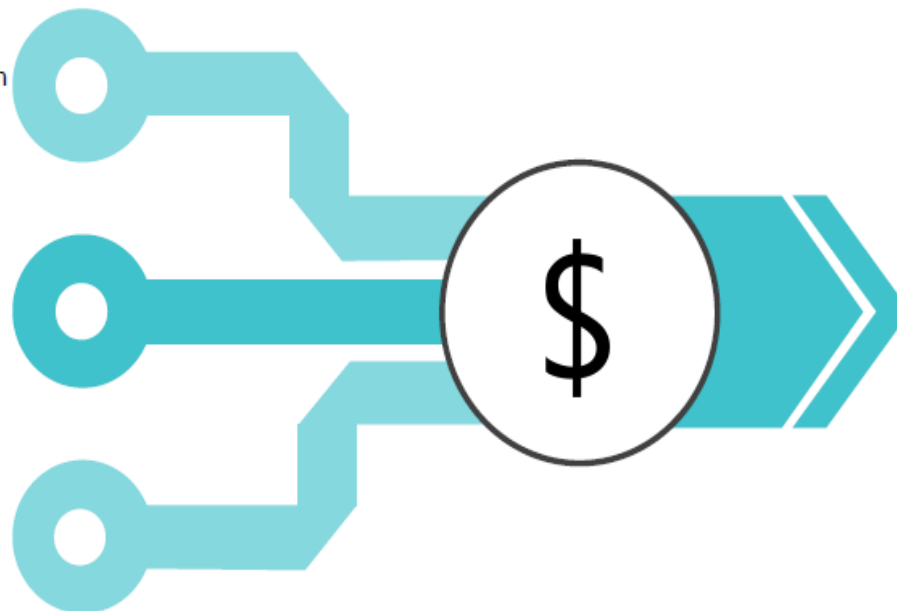
Non-payment by buyers, discounts, deferred payment, deferred shipment, forced loan to pay B/B LC, buyers' bankruptcy, uncertainty over payment receivables

### Freefall in Export

The industry has lost 6 billion dollars in export in FY2019-20, meaning that the capacity was seriously under utilized

### Disruption in supply chain

Sudden disruption in the supply chain like the unavailability of accessories and processing requirement make the operations inefficient.



Increased unit cost of production, against declining unit value

## Green Growth

### BANGLADESH

Home to world's highest number of green garment factories

- **148 LEED green garment factories certified by the U.S. Green Building Council (USGBC)**
- **9 out of the world's top 10 green garment factories are in Bangladesh**
- **40 out of the world's top 100 green industrial projects are in Bangladesh**
- **500 more factories are in the process of getting LEED certification**



**148**  
**CERTIFIED**



**42**  
**PLATIUM**



**89**  
**GOLD**



**12**  
**SLIVER**

## Priorities

1

Diversification of product, materials and markets

2

Capacity optimization

3

Industry, product and skill innovation

4

Tapping the opportunities in ever growing online market

5

Sustainability

**Thank You**